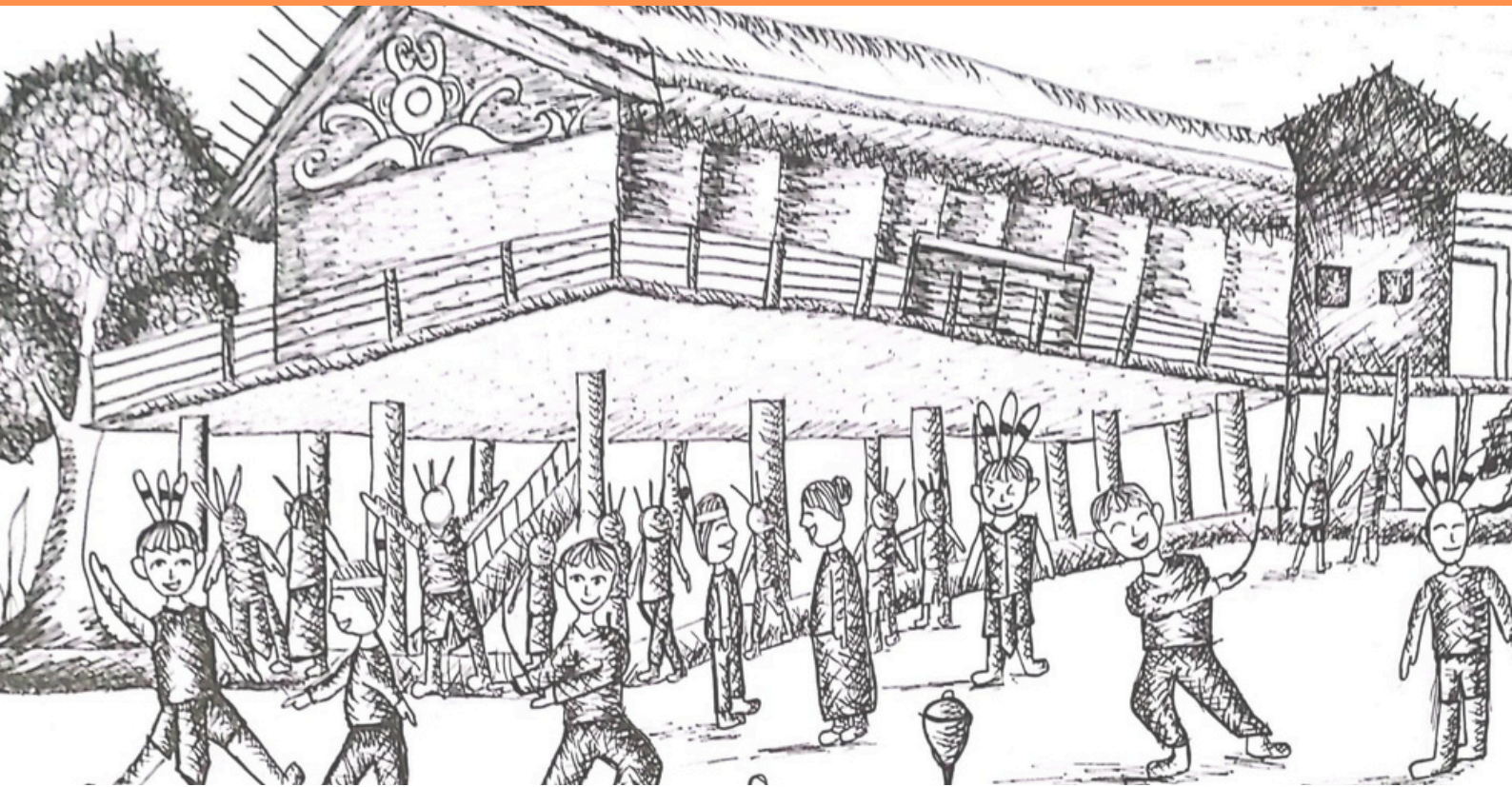




CHAKRA
CULTURAL
FOUNDATION

Annual Report

2024



Drawing by Sada Alma Arkarna

Chakra Cultural Foundation

Foundation for Cultural Research, Education and Affiliation

www.chakracultural.org

Jakarta, Indonesia

Content



Preface	3
About Us	4
Organization Structure	5
Management Team Profile	6
Affiliation	9
Programs:	11
1. Cultural Workshop and Collaboration	
2. Cultural Research	
3. Visiting Historical Sites	
4. Conferences and Journals	
Sponsorship and Support	43
Program Planning 2025	45
Closing Statement	47



The year 2024 has been a remarkable milestone for Chakra Cultural Foundation. This year, we achieved tremendous progress in our mission to preserve and promote cultural heritage through diverse initiatives, partnerships, and community engagement.

Our team successfully conducted various offline and on-site programs that brought people together to celebrate and learn about culture in meaningful ways. One of our proudest achievements was visiting Italy with Indonesia's Children Ambassadors of Culture, where we collaborated with RWYC Italy in a vibrant cultural workshop. This initiative not only showcased the richness of Indonesian heritage on an international stage but also fostered cultural exchange and mutual understanding.

We expanded our horizons through groundbreaking research on oral traditions across three provinces in Indonesia, uncovering invaluable insights into local wisdom and practices. Additionally, our collaboration with Wikasatrian and Universitas Padjadjaran further strengthened our foundation's reach, enabling us to integrate academic rigor and innovative approaches into our programs.

This year's accomplishments reflect our commitment to fostering cultural sustainability through education, research, and collaboration. We extend our deepest gratitude to all our partners, collaborators, and supporters who have made these endeavors possible. Together, we continue to inspire and empower communities to cherish their cultural identities while embracing the future.

As we look ahead, we are filled with optimism and determination to further our mission in the coming years. Thank you for your continued support and trust in Chakra Cultural Foundation.

Warm regards,
Mira Sartika

About Us

Vision Statement

To underlay the culture as the foundation for the settlement of the new global structure.

GOALS :

1. “Ingesting Idea Afresh”

Awakening cultural awareness to the society

2. “Resettling Cognitive Structure”

Reconnoitering cultural cognition in the global community

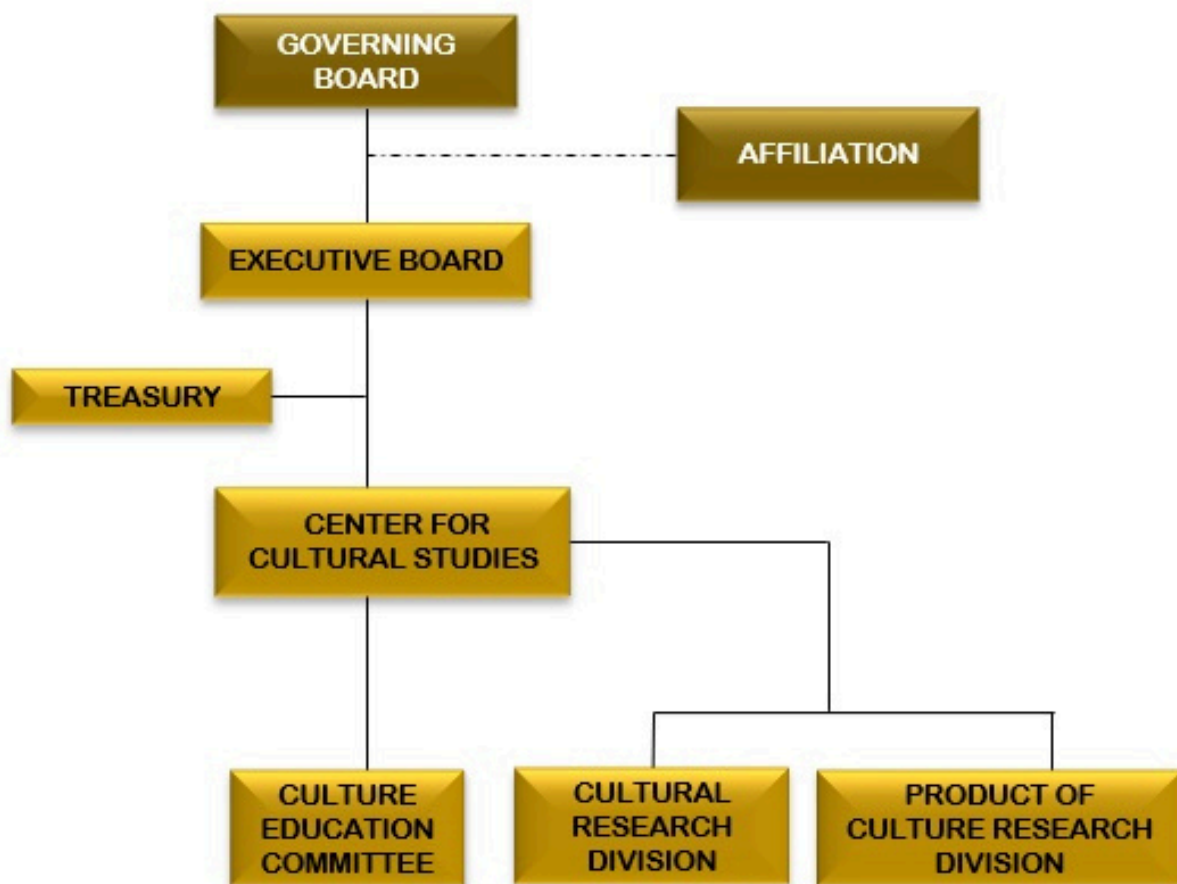
Mission Statement

Chakra Cultural Foundation is dedicated to redefining the essence of culture, transcending traditional boundaries to uncover its profound significance. By fostering global collaborations, conducting innovative research, and engaging communities, we aim to integrate cultural heritage into the fabric of modern life.

Our mission is to inspire cultural sustainability, empowering individuals and societies to embrace their identities while adapting to the demands of a dynamic and interconnected future.



Organization Structure



Management of Chakra Cultural Foundation

Head Department : Mira Sartika, PhD

Member : Asri Wulandari

Wilita Putrinda, S.Psi, Psikolog, M.Kom.

Elena Zachnas S.Psi, Psikolog, M.Sc

dr. Isabela Andhika Paramita, M.Res.

Taufik Gunawan

Management Team Profiles



Mira Sartika
Chairwomen



Wilita Putrinda
Treasury



Asri Wulandari
Program
Management

Management Team Profiles



Elena Zachnas
Program Support



**Isabela Andhila
Paramita**
Research
Management



Taufik Gunawan
Media and
Documentation

Management Team Profiles



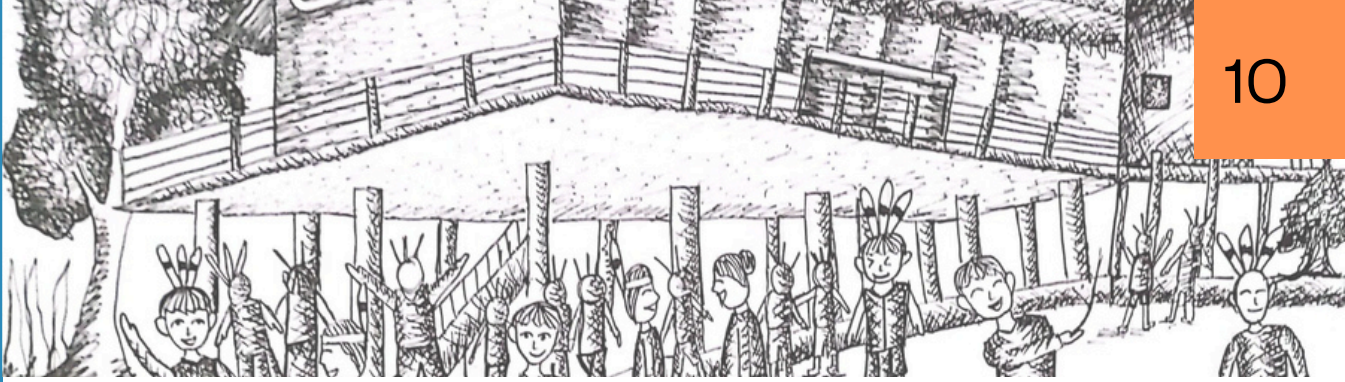
Ayu Poernamaningrum
Admin 1



Sri Amanda Ismi
Admin 2



1. RWYC International (Prof. Olimpia Niglio - Italy)
2. RWYC Networks in 4 Continents
3. World Culture Project (D. Paul Schafer - Canada)
4. The Jena Declaration (Prof. Benno Werlen - Germany)
5. Direktorat Jendral Kebudayaan (Dr. Hilmar Farid)
6. Ichinogami/Peri Kertas (Mr. Rauf Raphanus - Indonesia)
7. Sanustra (Mr. Yusuf Darmawan - Indonesia)
8. LIMAS FISIP University of Indonesia
9. FIKOM Universitas Padjadjaran (Dr. Evie Aridne Shinta Dewi)
10. UNESCO, Jakarta (Ms. Ester Dina)
11. DAMAS - Daya Mahasiswa Sunda, Bandung
12. Gegas - Gerakan Gastronomi, Bandung
13. Kalacemeti Studio, Wonosobo, Jawa Tengah
14. Inibudi.org, Jakarta
15. Wikasatrian, Bogor, Jawa Barat (Mrs. Tonny Warsono)
16. Center for Young Scientists (CYS) (Mrs. Monika Raharti)
17. Berdamai dengan Cancer (Ms.



Signatory of



THE JENA DECLARATION

RWYC INDONESIA



beautiful sustainable together



SUBAGA SAFF MADANI
PT. SUBAGA SAFF MADANI



Affiliation

PROGRAMS



Cultural
Workshop &
Collaboration



Cultural
Research



Visiting Historical
Sites



Conferences and
Journals

PROGRAMS 2024

01

CULTURAL WORKSHOPS & COLLABORATION

1. Angels Drawing Exhibition Japan 2023-2024
2. Cultural Mission to Italy
3. Sanustra Workshop with FIKOM UNPAD
4. Rekonstruksi Kesadaran Genetika Budaya with Wikasatrian
5. Amakusa Drawing Exhibition
6. Competition Judges and Affiliate Collaboration with CYS
7. Podcast Mira Outlook on Spotify

04

CONFERENCES AND JOURNAL WRITING

1. 3rd InaSHG Annual Meeting and Conference in Malang, East Java 21 - 23 November 2024
2. KONPI - Conference of Indonesian Pre-history, Solo, Central Java, 2 -6 December 2024
3. TAMBO Journal in BRIN on Oral Tradition Theme

02

CULTURAL RESEARCH

Inventory Oral Tradition in connection to Personalized Medicine in 3 provinces in Indonesia

1. Kabupaten Bandung Barat, West Java
2. Bali
3. Kabupaten Lombok Utara, West Nusa Tenggara

03

VISITING HISTORICAL SITES

1. Desa Sasak Sade, Lombok, West Nusa Tenggara
2. Song Terus Museum, Pacitan, East Java
3. Giza Pyramid, Cairo, Egypt
4. City of Alexandria, Egypt



Cultural
Workshop &
Collaboration

Participation in Angels Drawing Japan 2023-2024

The Angels Drawing exhibition at 4 museums in Tokyo and Sapporo is always held by RWYC Japan, where children all over the world are invited to send paintings or works to be exhibited at 4 museums in Tokyo and Sapporo.

In 2023 - 2024, we succeeded in sending 11 paintings created by Cultural Ambassadors from all over Indonesia. The following is a list of Cultural Ambassadors who submitted their work:

1. Wijdan Adam Mondale from Sumatera Barat - Tabuik
2. Grisella Kenaisyah Paramesti from Palangcara - Pakaian Tradisional Jawa Tengah
3. Komang Ari Kirana Candra Lestari from Bali - Barong Dance
4. Hafizqiel Raskha Imannual from Sumatera Barat - Silek
5. Moch. Fawaz Yude Pradana from Jawa Barat - Desa di Jawa Barat
6. Queen Alecia Mondale from Sumatera Barat - Plate Dance
7. Farisyah Zahara from Sumatera Utara - Budaya Sumatera Utara
8. Sada Alma Arkarna from Kalimantan Barat - Pangka Gasikng

The exhibition went very smoothly, and the eleven Cultural Ambassadors also received postcards from children in Japan who appreciated their paintings. What a truly extraordinary thing this global network through cultural communication is. All the work of children from all over the world exhibited at this event is used as a book catalogue. The following is a video of the Cultural Ambassadors for the 2023-2024 Angels Drawing exhibition https://youtu.be/Bm_qAg2PDFQ?feature=shared.



Cultural Mission to Italy

Chakra Cultural Foundation is dedicated to the development and research of culture while fostering partnerships in the cultural domain. One of our key initiatives is organizing Cultural Workshops for the youth of Indonesia, aimed at strengthening awareness of cultural diversity, particularly local cultures. Over 250 children have participated in our Cultural Ambassador initiative, spanning more than 20 provinces from Aceh to Papua. Their artistic and cultural creations have been showcased through various mediums, including videos, paintings, presentations and illustrations.

Among our diverse programs, we maintain strong relations with RWYC International. This year, in celebration of World Children's Day 2024, RWYC International organized a program to gather participation from children across the globe.

Aligned with this initiative, we conducted Cultural Mission to RWYC International, featuring Cultural Ambassadors from several provinces of Indonesia with support and sponsored by Ministry Education, Culture, Research and Technology through Dana Indonesiana and PERTAMINA. This event took place from May 19–30 in Lucca and Rome, Italy. The participation of Indonesia's Cultural Ambassadors in such an internationally-scaled activity has become increasingly vital. It represents a significant investment in Indonesia's future by showcasing the nation's human resource capabilities, particularly in the field of culture, to children worldwide.

Here is the list the children who choosen to be participated in this mission:

1. Sada Alma Arkarna (Kalimantan Barat)
2. Grisella Kenaisyah Paramesti (Kalimantan Tengah)
3. Wijdan Adam Mondale (Sumatera Barat)
4. Made Ade Sintia Novita Riasri (Bali)
5. Ryu Ghazi Pramuji (DKI Jakarta)
6. Moch. Fawaz Yude Pradana (Jawa Barat)

Through this mission, the Chakra Cultural Foundation has proudly contributed to elevating Indonesia's cultural presence on the global stage while empowering the younger generation to take pride in their heritage.

Short Video of our Cultural Mission to Italy:
https://youtu.be/xSKFhzKI-Wo?si=C-1tAS48F9_ACQMI

Cultural Mission

18 - 26 May 2024 | 11.00 s/d 20.00 CET
Archbishopric of Lucca, Tuscany and Rome

Join the Cultural Workshop between Italy & Indonesian students

Workshop, Discussion, Performance and...

NEW FRIENDS

More info: +39 3402766953
rwyk.international@gmail.com
<http://esempiarchitettura.it/site/edakids-reconnecting-with-your-culture/>

CHAKRA CULTURAL FOUNDATION

Documentation of Cultural Mission to Italy



Sanustra Workshop with FIKOM UNPAD

RuangTenang Sanustra was designed as a response to the growing stress and pressures faced by Indonesia's younger generation. Through an immersive sensory experience, this installation sought to connect visitors with nature and the cultural heritage of Nusantara, while raising awareness about the importance of mental well-being.

The event aimed to:

- Alleviate stress and pressure through relaxation experiences.
- Enhance awareness of the importance of mental balance and well-being.
- Strengthen connections with nature and local culture.
- Encourage appreciation of art and science.
- Facilitate open discussions about mental health and social change.

Target Audience

- University students.
- University educators and staff.

Event Details

- Date: June 24, 2024
- Time: 10:00 AM – 5:40 PM
- Venue: Faculty of Communication, Universitas Padjadjaran

After attending the event, students were asked to write an essay reflecting on their feelings and insights gained during the experience. They were encouraged to elaborate on their newfound awareness and propose actionable plans to create social change within their immediate environment.

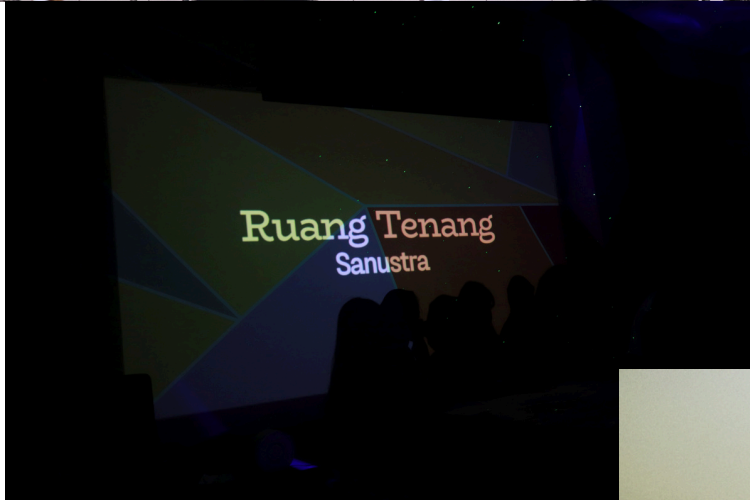
Outcomes

- Participation: The event attracted over 100 participants, including students and faculty members,
- Insights: Visitors reported feeling more relaxed and inspired, with many expressing a deeper connection to their cultural roots and a heightened awareness of the importance of mental well-being.
- Action Plans: Essays submitted by students revealed creative and practical ideas for promoting mental health and fostering social change, ranging from organizing community-based workshops to integrating mindfulness practices into their daily lives.

RuangTenang Sanustra successfully achieved its objectives of reducing stress, enhancing awareness of mental well-being, and fostering appreciation for nature and culture. The event highlighted the critical role of art and sensory experiences in addressing mental health challenges and driving positive social transformation.

We extend our gratitude to Dr. Evie Ariadne Shinta Dewi from Universitas Padjadjaran for hosting this initiative and to all participants for their enthusiasm and contributions. RuangTenang Sanustra marks the beginning of a broader conversation about mental health, culture, and social change, and we look forward to expanding this movement in future endeavors.

Documentation of Sanustra Workshop with FIKOM UNPAD



Rekonstruksi Kesadaran Genetika Budaya with Wikasatrian

In collaboration with Wikasatrian we create The "Kawah Pandu" installation. It was designed to deliver an immersive sensory experience through the stimulation of the five senses: sight, hearing, smell, taste, and touch. This installation merges natural and cultural elements of Nusantara to enhance mental and emotional well-being. Developed specifically for the Wikasatrian training themed "Rekonstruksi Kesadaran – Genetika Budaya: Turba ke PPU Wika (Pandu Wika)", the concept draws from the principles outlined in Cultural Genetics (Sartika, 2018).

The book highlights the significant relationship between sensory input from the natural environment and the regulation of genes within the human genome. Kawah Pandu aims to foster a deep awareness of the importance of mental and emotional balance by integrating art, science, and culture to inspire fundamental and holistic consciousness reconstruction.

The Kawah Pandu initiative was guided by the following objectives:

1. Enhancing Mental and Emotional Awareness
 - To provide an immersive sensory experience that fosters mental and emotional well-being by stimulating the five senses.
2. Integrating Art, Science, and Culture
 - To create a unique approach combining artistic, scientific, and cultural elements in line with the Wikasatrian training theme.
3. Applying Cultural Genetics Concepts
 - To operationalize insights from Cultural Genetics (Sartika, 2018) about the sensory environment's influence on gene regulation through a deeply engaging experience.
4. Facilitating Learning and Personal Development
 - To align with the "Kawah Candradimuka" philosophy, helping participants confront and resolve deep-seated fears, promoting resilience and emotional growth.
5. Supporting Consciousness Reconstruction
 - To provide an environment where participants can explore and reframe personal memories and emotions, fostering a profound sense of self-awareness and balance.

Kawah Pandu proved to be a powerful medium for fostering mental well-being and cultural awareness. By merging the arts, sciences, and traditions of Nusantara, the installation successfully bridged the gap between modern challenges and traditional wisdom. This project still on-going and we carried on in 2025.

Documentation Rekonstruksi Kesadaran Genetika Budaya with Wikasatrian



Amakusa Pottery Drawing Exhibition

The Amakusa Pottery-Themed Art Exchange Exhibition, hosted by RWYC Japan. This initiative marked a significant milestone for RWYC Amakusa, as it was the first year participating in RWYC activities. The event aimed to celebrate Amakusa's rich pottery heritage by fostering international cultural exchange through art.

Goals of the Exhibition

1. Promote Cultural Awareness: To showcase Amakusa's identity as a porcelain stone district and highlight its vibrant pottery culture.
2. Encourage Artistic Expression: To engage children and international students in creative art-making inspired by pottery design.
3. Facilitate Global Connections: To establish friendships and cultural understanding between students from Amakusa and international participants.

From Indonesia we send several drawing from ambassador of Culture.

Here is the list of Indonesian Children who participate in Amakusa Exhibition.

1. Komang dari Bali
2. Made Ade dari Bali
3. Sada Alma dari Kalimantan Barat
4. Adam Wijdan dari Sumatera Barat
5. Queen dari Sumatera Barat
6. Hafizqiel dari Sumatera Barat

Here is the link to the video from Amakusa Exhibition in Amakusa, Japan https://youtu.be/ncMJ9_28KVA.



Documentation from Amakusa Pottery Drawing Exhibition



Competition Judges and Affiliate Collaboration with CYS

CYS is dedicated to promoting research at the elementary and secondary school levels while enhancing teachers' mentoring capabilities and fostering a research-oriented atmosphere.

To achieve these goals, CYS establishes ethical guidelines and international standards for student research projects. It also monitors and collects data on research topics pursued by elementary and secondary school students.

Additionally, CYS offers a range of programs specifically designed to support students, teachers, and schools in their research endeavors.

CCF has been invited to collaborate with CYS in various event including science competition, seminar or workshop.

Mrs. Monika Raharti and our chairwoman Ms. Mira Sartika signed MOU on the October 2024. These collaborations are committed to fostering innovation, promoting research culture among students, enhancing teachers' mentoring capabilities, and creating an environment that supports academic and scientific exploration.

We also being invited to become a judge in history research competition in Institute Teknologi Bandung.



Podcast Mira Outlook on Spotify

Mira Outlook is a dynamic talk show podcast available on Spotify, focusing on a diverse range of topics including Culture, History, Economics, Science, and Sustainability. Hosted by experts and featuring authorities and prominent figures from around the world, as well as Indonesia, the podcast aims to provide listeners with insightful discussions on the latest developments in these fields.

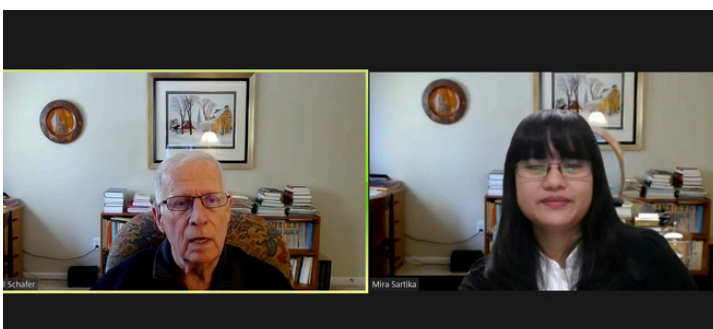
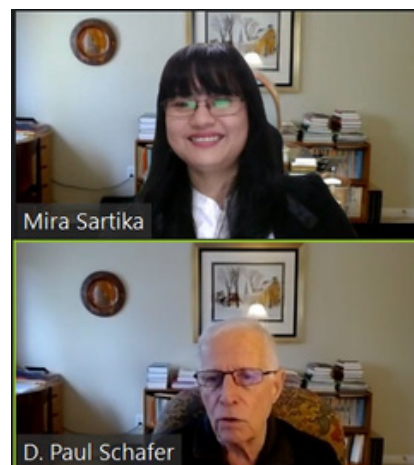
The podcast covers contemporary issues, highlighting advancements in cultural preservation, scientific discoveries, and sustainable practices, while exploring their applications in modern society. By engaging with leading thinkers and thought leaders, Mira Outlook offers listeners a deep dive into the evolving world of culture, sustainability, and innovation, delivering knowledge that is both timely and relevant to global and local contexts.

To capitalize on the knowledge, wisdom, publications, and activities of people who have been working in the cultural and scientific fields for a long period of time and direct the discussions with them to young people and future generations.

Our first episode is available on this link :

<https://open.spotify.com/episode/5PHlucQsQKgWsiDmiYL1z1?si=308813250f9f4d56>

We have already a list of speakers to be invited to this podcast such as Prof. Olimpia Niglio, and many more.





Cultural
Research

Inventory Oral Tradition in connection to Personalized Medicine

Chakra Cultural Foundation initiated the Oral Tradition Inventory Program to address the gradual disappearance of Indonesia's oral traditions. These traditions, rich with cultural and intellectual heritage, hold significant potential as references for advancing sciences, particularly in personalized medicine. The program focuses on five transition rituals from three provinces—West Java, Bali, and West Nusa Tenggara—chosen for their cultural diversity and relevance to interdisciplinary research.

Objectives

1. Document Oral Traditions: Capture elements of oral traditions, including stories, chants, and rituals related to health and medicine.
2. Support Research: Provide foundational data for personalized medicine studies, focusing on genetics, environment, and cultural health practices.
3. Cultural Preservation: Contribute to the preservation of intangible cultural heritage while respecting and honoring local wisdom.

Activities and Methodology

1. Ritual Identification: Key rituals include birth, marriage, and death ceremonies from the following regions:
 - West Java (Sunda): Rituals such as Siraman.
 - Bali: Unique Hindu-Balinese traditions like Odalan and Metatah.
 - West Nusa Tenggara (Sasak): Rich marital and initiation rites.
2. Data Collection: Involved interviews with local elders, shamans, and oral tradition experts, combined with direct observation and literature review.
3. Cultural Analysis: Patterns and insights from rituals were analyzed for their implications in health, disease prevention, and treatment practices.

Key Findings

1. Cultural Health Practices: Rituals reveal the use of traditional medicine, dietary recommendations, and preventive health measures tailored to local environments.
2. Environmental and Genetic Links: Traditions reflect adaptation to environmental factors and provide clues about hereditary diseases.
3. Unique Cultural Identities: Regional distinctions highlight diverse approaches to health and wellness rooted in traditional knowledge.

Inventory Oral Tradition in connection to Personalized Medicine

Outputs and Impact

- Database of Oral Traditions: A rich repository of documented rituals available for further research and cultural education.
- Reference for Personalized Medicine: Data that bridges local wisdom with scientific advancements, enhancing context-specific healthcare strategies.
- Increased Cultural Awareness: Strengthened efforts to preserve and honor Indonesia's intangible cultural heritage.

Recommendations

- Expand the inventory to additional regions and rituals to create a comprehensive database.
- Collaborate with medical and academic institutions to integrate findings into personalized medicine frameworks.
- Promote public awareness of the importance of oral traditions in preserving cultural identity and advancing science.

The program successfully establishes a foundation for holistic, culturally informed research in personalized medicine while celebrating Indonesia's vibrant heritage. Link to our short video of the research: <https://www.youtube.com/watch?v=CQPoUIJpnQQ&list=PLdjQjQxEp3-uBWuDPFAI4AScMaB5C9iKu>



Documentation Inventory Oral Tradition in connection to Personalized Medicine in Kabupaten Bandung Barat, West Java



Documentation Inventory Oral Tradition in connection to Personalized Medicine in Bali



Documentation Inventory Oral Tradition in connection to Personalized Medicine in Lombok Utara, West Nusa Tenggara





Visiting Historical
Sites

Visiting Giza Pyramid and National Museum of Egypt

Visiting the Giza Pyramids and the National Museum of Egypt is a captivating journey into the heart of one of the world's most remarkable ancient civilizations. Standing before the majestic pyramids, their monumental scale and precise construction inspire awe and curiosity. The Great Pyramid, a Wonder of the Ancient World, and the enigmatic Sphinx together form a panorama that leaves a lasting impression of grandeur and mystery. Walking among these historic structures, one can feel the echoes of a civilization that mastered art, science, and engineering thousands of years ago.

The highlight of the journey lies within the halls of the National Museum of Egypt, particularly in the "Valley of the Kings" exhibit. Here, visitors encounter the preserved mummies of ancient Egyptian royalty, including some of the most famous pharaohs. The intricate sarcophagi, alongside funerary artifacts, offer an extraordinary glimpse into the meticulous rituals surrounding death and the afterlife. Observing the mummies, one can't help but marvel at the ancient Egyptians' profound belief in immortality and their unparalleled expertise in preservation techniques.

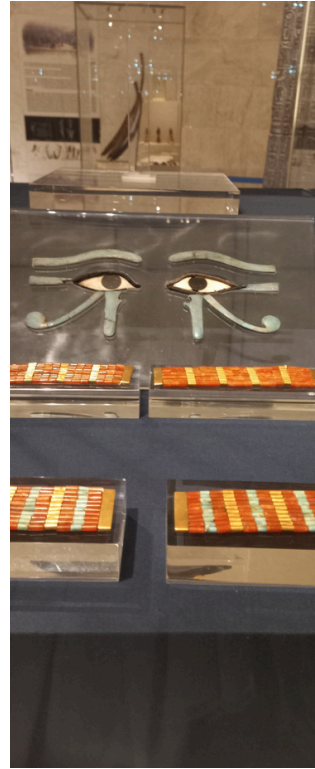
The exhibit creates an almost surreal atmosphere, where the passage of time feels momentarily suspended. It is both humbling and fascinating to stand before these ancient remains, each telling its own silent story of life, power, and eternity. This visit is not just an exploration of history but a profound connection to a culture that continues to influence and inspire the modern world.

We hope in the future we can collaborate research with the researcher in Egypt to explore and define the various mysterious story about the chronicles of the ancient Egyptian civilization.

Visiting historical sites is always important for our foundation because it aligns with our mission to preserve, study, and promote cultural heritage. These visits provide an invaluable opportunity to experience history firsthand, deepening our understanding of ancient civilizations and their contributions to humanity.

By exploring such sites, we gain insights into the architectural brilliance, artistic achievements, and cultural values of the past, which inform our educational and research initiatives. These programs also foster a sense of appreciation and responsibility among participants to safeguard these treasures for future generations.

Documentation Visiting Giza Pyramid and National Museum of Egypt



Visiting City of Alexandria in Egypt

Alexandria, Egypt, is a city steeped in history and charm, offering visitors a unique opportunity to explore the remnants of a glorious past alongside vibrant modern attractions. Founded by Alexander the Great in 331 BCE, Alexandria quickly became a renowned center of knowledge and culture, attracting scholars and visionaries from across the ancient world. Today, it continues to enchant with its fascinating blend of ancient history, diverse cultures, and Mediterranean allure.

One of the city's most iconic landmarks is the Bibliotheca Alexandrina, a stunning architectural marvel and modern tribute to the legendary Library of Alexandria. This cultural hub houses millions of books, rare manuscripts, and intriguing exhibitions, making it a haven for knowledge seekers and history enthusiasts. Nearby, the Catacombs of Kom El Shoqafa offer a glimpse into the city's rich heritage, with their unique fusion of Egyptian, Greek, and Roman artistic styles in a subterranean necropolis.

The Citadel of Qaitbay, a 15th-century fortress built on the ruins of the ancient Lighthouse of Alexandria, stands proudly overlooking the Mediterranean Sea. It provides breathtaking views and a chance to reflect on the city's strategic maritime importance. Walking along the Corniche, visitors can experience the bustling life of modern Alexandria, lined with cafes, markets, and seaside promenades that offer a relaxing escape.

Alexandria also holds treasures such as the Roman Amphitheatre, Montaza Palace Gardens, and countless museums, each narrating a chapter of the city's layered history. Its coastal charm, combined with a lively arts and culinary scene, ensures that Alexandria appeals to a broad spectrum of interests.

Visiting Alexandria is more than a journey through a historic city; it is an exploration of a place where the ancient and modern coexist in harmony, offering insights into humanity's enduring quest for knowledge and beauty.

Moreover, visiting historical sites allows us to build meaningful connections with local communities and heritage organizations, strengthening collaborations aimed at cultural preservation and sustainable tourism. Ultimately, these experiences enrich our foundation's efforts to bridge the past and present, inspiring innovation and respect for diverse cultural legacies.

Documentation of Visiting City of Alexandria in Egypt



Visiting Desa Sasak Sade, Lombok, NTB

Our visit to Desa Sasak Sade in Lombok offered an enriching experience, immersing us in the unique traditions and culture of the Sasak people. Renowned for its preservation of ancestral heritage, this traditional village showcases authentic Sasak architecture, lifestyle, and customs. The traditional houses, or bale, are constructed using natural materials such as bamboo, wood, and thatched roofs. The floors, polished with a mixture of clay and cow dung, symbolize cleanliness and simplicity, reflecting the villagers' harmonious connection with nature.

We observed weaving demonstrations, where women craft intricate songket textiles using traditional looms. These vibrant fabrics are central to Sasak culture, often worn during ceremonies and as symbols of identity.

The guided tour provided insights into daily life, rituals, and beliefs, including traditional dances like the Peresean martial art performance, which embodies courage and strength. The villagers warmly shared their customs and stories, fostering a deep appreciation for their cultural richness.

Desa Sasak Sade is not just a tourist destination but a living testament to the enduring spirit of the Sasak community. The visit underscored the importance of preserving such heritage, offering a glimpse into a way of life deeply rooted in tradition.



Visiting Museum Song Terus in Pacitan, East Java

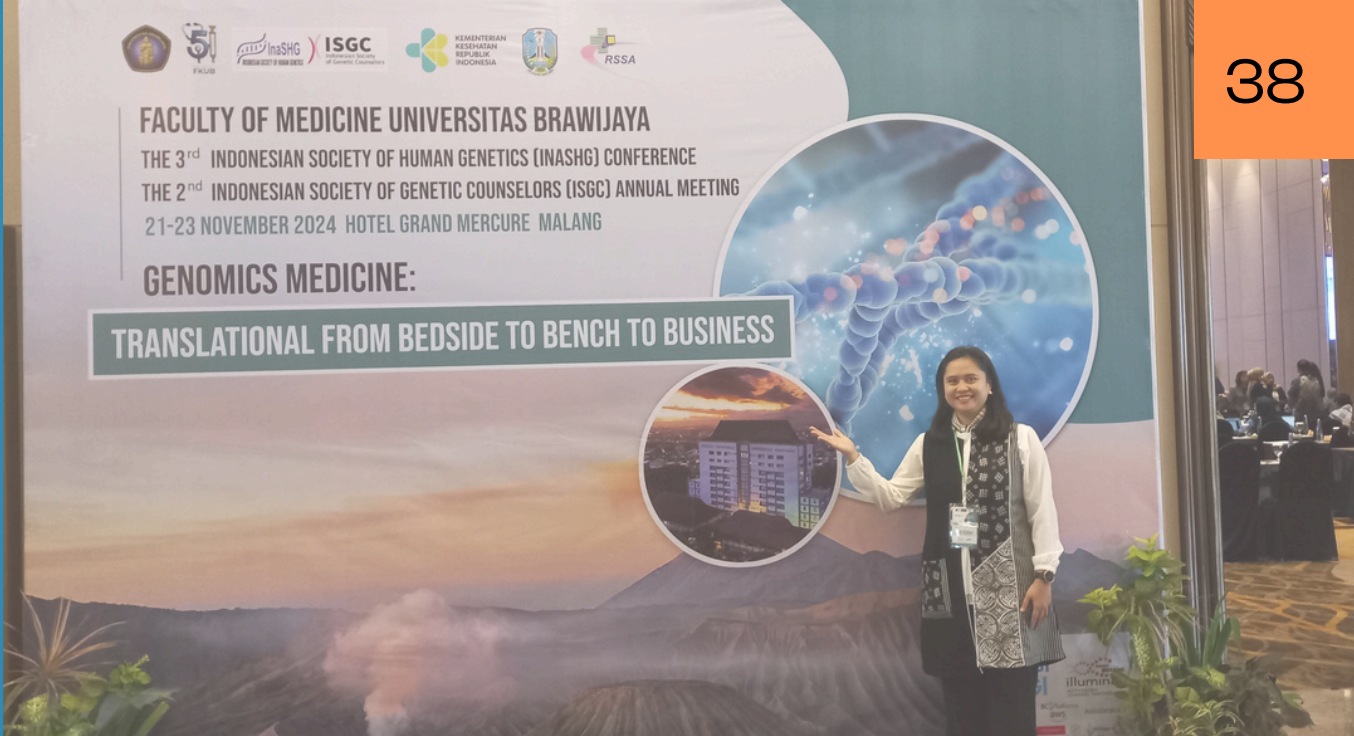
Our visit to the Museum Song Terus in Pacitan provided a fascinating journey into Indonesia's prehistoric heritage. Located in the heart of East Java, this museum highlights archaeological findings from the Song Terus cave and surrounding areas, offering valuable insights into early human life.

The exhibits showcase artifacts such as stone tools, fossilized remains, and evidence of early human habitation spanning thousands of years. These discoveries reveal significant information about human adaptation, tool usage, and environmental interaction during prehistoric times.

One of the most captivating aspects of the museum is the detailed presentation of findings from the Song Terus cave excavation site, including evidence of ancient burials and artistic expressions. The museum effectively combines scientific rigor with accessible storytelling, making it both educational and engaging.

This visit reinforced the importance of preserving archaeological sites and understanding their contributions to Indonesia's historical narrative. Museum Song Terus stands as a vital resource for researchers and the public, connecting us to the lives of our distant ancestors.





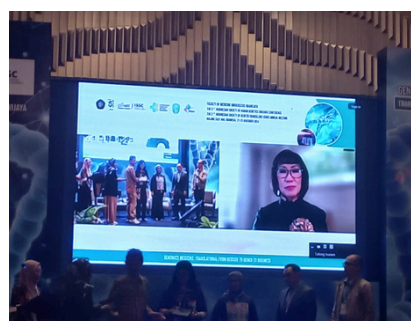
Conferences and Journals

3rd InaSHG Annual Meeting and Conference in Malang, East Java 21 - 23 November 2024

The 3rd InaSHG Annual Meeting and Conference, held in Malang, East Java, from November 21-23, 2024, provided an enriching experience for participants in the field of genetics and personalized medicine. I had the privilege of presenting my paper, titled **"Nutrigenomics and Traditional Food: What Will They Mean for Personalized Medicine?"** This research, which I collaborated on with dr. Isabela Andhika, delves into the intersection of genetics, nutrition, and traditional food practices, exploring their potential implications for the future of personalized medicine.

Throughout the conference, I found numerous valuable insights, especially in the realm of genetics, as new studies were shared that could significantly advance our understanding of genetic diversity and health outcomes. The keynote speeches by Prof. Herawati Sudoyo and Prof. Mubarika were particularly fascinating, as they incorporated the role of culture and environment in genetics research. Their discussions on how cultural practices and environmental factors influence genetic expression and health outcomes resonated with my own research interests, furthering the importance of considering these aspects in personalized medicine.

Overall, the conference was an excellent platform for networking with professionals in the field and gaining exposure to cutting-edge research. The collaborative atmosphere and rich discussions contributed greatly to my own understanding and provided fresh perspectives on how genetic science is evolving, particularly in the context of personalized medicine and the integration of traditional knowledge. We also have an excursion to Mount Bromo



KONPI - Conference of Indonesian Pre-history, Solo, Central Java, 2 -6 December 2024

I attended the KONPI (Conference of Indonesian Pre-history) in Solo, Central Java, from December 2-6, 2024, where I had the honor of presenting our paper entitled **"Reconstructing Cultural Diffusion: Analyzing Artifact Similarities Found in Indonesia and Abroad to Understand Patterns of Cultural Dispersal."** This paper, written in collaboration with Dr. I Putu Gede Suyoga, Dr. Evie Ariadene Shinta Dewi, and Dr. Isabela Andhika Paramita, focuses on the comparison of archaeological artifacts found in Indonesia with those in other regions, to uncover patterns of cultural exchange and diffusion.

The conference provided an excellent platform to discuss various aspects of Indonesia's pre-history, including the significant role of artifacts in tracing cultural interactions across ancient civilizations. Our presentation highlighted the importance of analyzing similarities in artifacts to gain insights into historical trade routes, migration patterns, and the spread of cultural practices.

The event was graced by notable figures, including the Minister of Culture, who emphasized the importance of preserving Indonesia's rich cultural heritage. The discussions throughout the conference were stimulating, with numerous scholars and experts sharing their research on various aspects of Indonesian pre-history, including the influence of other ancient cultures on local traditions.

Looking ahead, it was announced that the next major conference on pre-history will be held in Salatiga, Yogyakarta, and Sangiran, Solo, from October 27 to November 6, 2025. Organized by the UISPP (International Union of Prehistoric and Protohistoric Science), the conference will focus on the theme "Asian Prehistoric Today: Bridging Science, Heritage, and Development." This upcoming event promises to be an even larger gathering of scholars and researchers, offering opportunities for further exploration and collaboration in the field of prehistoric studies.

Overall, the KONPI conference was a valuable opportunity for collaboration, knowledge exchange, and further exploration of Indonesia's cultural heritage, contributing significantly to the field of cultural diffusion studies and archaeological research.

Documentation of KONPI - Conference of Indonesian Per- history, Solo, Central Java, 2 -6 December 2024



TAMBO Journal in BRIN on Oral Tradition Theme

This year, our foundation was honored to be invited to present papers at three prestigious international conferences in Turkey, Dublin, and Kyoto, Japan. Our accepted abstracts were as follows:

1. **Deciphering earth's landscape impact: unraveling cultural patterns through architectural narratives** - Turkey - IFLA CODE RED FOR EARTH - 4 to 6 September 2024 Istanbul, Turkey
2. **Constituting Cultural Education to the Youth in Creating Global Cultural Networks to Achieve Sustainability through Cultural Approaches** - Dublin - 35th International Geographical Congress 2024
3. **The Meaning Of The Architectural Worship Of The Five Religions In The Puja Mandala Nusa Dua Bali** - Kyoto - Sacred Journeys 11th Global Conference: Kyoto, Japan

Unfortunately, due to limited funding, we were unable to attend these conferences. Instead, we focused our available resources on programs that directly contribute to the preservation and advancement of cultural heritage.

Despite not attending these events, we remained committed to sharing our research and insights. Consequently, we submitted our papers to local journals initiated by BRIN (National Research and Innovation Agency). Additionally, we are in the process of submitting papers from the conferences we did attend this year, ensuring our work reaches the broader academic community.

Our paper entitled : **Ritual Kehamilan, Kelahiran dan Akil Balig di Desa Nyalindung, Kabupaten Bandung Barat sebagai Faktor Epigenetika Perilaku Sunda** and is the process of publishing. This paper written together with dr. Isabela Andhika dan Bapak Hernandi Tismana. Link to the article: <https://ejournal.brin.go.id/tambo/issue/view/927>.

Sponsorship and Support

Government



Corporation



Private and Stakeholders



This year, our foundation successfully secured funding for conducting our programs, primarily supported by the government through the Dana Indonesiana initiative. In addition to this governmental support, the remainder of our funding was contributed by various corporations, private donors, and key stakeholders who believe in our mission and objectives.

Looking ahead to next year, we are focused on expanding our sources of funding. We aim to explore new opportunities by seeking support from international NGOs, as well as strengthening our collaborations with both private organizations and corporate partners. This strategic expansion will help ensure the continued success and sustainability of our foundation's programs and initiatives, allowing us to further enhance our impact and reach.



In 2024, we implemented a wide range of successful programs, which can be evaluated as follows:

1. Cultural Preservation and Research:

- **Success:** We made significant strides in collecting and documenting oral traditions and rituals across different provinces, including Bali, West Java, and Nusa Tenggara Barat. The data gathered from these regions will play a key role in future research on personalized medicine.
- **Challenges:** The scope of the fieldwork and data collection exceeded initial expectations, leading to some delays in the reporting process.

2. International Conferences:

- **Success:** Our participation in conferences, such as the 3rd InaSHG Annual Meeting and the KONPI Conference, was fruitful. We successfully presented our paper on "Nutrigenomics and Traditional Food" and received positive feedback from the academic community.
- **Challenges:** Although we were invited to international conferences in Turkey, Dublin, and Kyoto, we were unable to attend due to funding constraints. This limited our direct international visibility.

3. Funding and Support:

- **Success:** This year, we secured funding primarily through government support via Dana Indonesiana. This funding, along with contributions from private corporations and stakeholders, allowed us to execute our planned programs.
- **Challenges:** The reliance on government funding has limited our flexibility in exploring broader collaborative opportunities. In the future, diversifying funding sources will be critical.

4. Community Engagement and Education:

- **Success:** We made considerable progress in community engagement, especially in the preservation of oral traditions. Programs focused on traditional rituals and the relationship between culture and health were well-received by local communities.
- **Challenges:** We need to increase our outreach efforts, especially in more remote areas, to ensure a broader impact.

In conclusion, 2024 was a year of both achievement and challenges. Moving forward, we plan to leverage our successes while addressing areas that require improvement, particularly in diversifying our funding sources and enhancing our international presence.

Program Planning 2025

For 2025, our foundation is expanding its focus and outreach.

The program will emphasize the following key areas:

- 1. Cultural Preservation and Research Expansion:** We will continue our efforts in cultural preservation, focusing on further documenting and analyzing traditional knowledge and practices, particularly in the context of personalized medicine. This will include more extensive fieldwork across various provinces in Indonesia and collaborations with international researchers.
- 2. International Collaborations and Conferences:** Our foundation aims to strengthen partnerships with international organizations, universities, and NGOs. In line with this, we will participate in the upcoming UISPP conference in Salatiga, Yogyakarta, and Sangiran, Solo in October-November 2025, which will focus on bridging science, heritage, and development in Asian prehistory. We will also explore opportunities for more funding from international NGOs and private corporations.
- 3. Funding Diversification:** We plan to expand our sources of funding by engaging more private companies, corporations, and international NGOs. Additionally, we will work towards securing more government support through initiatives like Dana Indonesiana.
- 4. Sustainability Initiatives:** We will continue to strengthen our educational and community outreach programs, focusing on long-term sustainability by promoting awareness of cultural heritage and its connection to modern science and medicine.

Program Planning 2025

National	International
<ol style="list-style-type: none">1. Continue Collaboration with Wikasatrian2. Launching book and video Research Oral Tradition3. Continue collaboration with CYS4. Preparing Proposal for Dukungan Institutional Dana Indonesiana funding5. Video Competition on Maestro by Children across Indonesia6. Preparing secure research funding from BRIN7. Preparing local podcast and video8. and many more to come	<ol style="list-style-type: none">1. Collaboration with ION - Institute of Neurodiversity, Dubai2. Continue collaboration with RWYC International, Italy3. Preparing Attending Amakusa Exhibition in Japan4. Preparing secure research funding from Spencer Foundation, USA5. Preparing secure research funding from Sumitomo Foundation6. Continue implementing Mira Outlook podcast7. and many more to come

As we conclude our annual report for 2024, we reflect on the meaningful progress our foundation has made in advancing cultural preservation, research, and community engagement. This year, we have deepened our commitment to understanding the intersection of culture and science, particularly through the lens of personalized medicine, and have expanded our international collaborations and partnerships.

While we have faced challenges, particularly in securing broader funding and attending international conferences, these experiences have strengthened our resolve to diversify our sources of support and increase our visibility on the global stage. The invaluable data collected through our fieldwork and the research presented at various conferences will continue to guide our efforts in the coming year.

Looking ahead, we are excited about the opportunities in 2025, including our participation in significant international conferences and our continued focus on bridging science, culture, and development. We remain dedicated to the preservation of Indonesia's rich cultural heritage, while fostering new avenues for growth and collaboration.

We would like to express our deepest gratitude to our supporters, collaborators, and stakeholders, whose contributions have made our work possible. Together, we are creating a lasting impact that will resonate for generations to come.

Thank you for your continued support, and we look forward to another year of progress and achievement.

Warm regards,
Mira Sartika

Get In Touch



CHAKRA
CULTURAL
FOUNDATION

Thank you



Arvahub, Jalan Prof. Dr. Soepomo SH. No. 23, Tebet,
Jakarta Selatan, 12810, INDONESIA

+62 21 8302114

info@chakracultural.org

www.chakracultural.org